



uTrust Token Flex

Mobile Security Under Your Control



Identiv's uTrust Token Flex features secure mobility for portable digital identity and authentication.

For high security in demanding corporate environments, Identiv offers a number of solutions, ranging from desktop smart card readers to mobile smart card tokens that can be used with a variety of smart card-technology based credentials.

The uTrust Token Flex offers users secure mobility for mobile desktop applications in PC connected mode. All uTrust Tokens enable strong two-factor authentication, combining something users have — the token — with something they know — their PIN code.

Depending on the type of smart card chosen, the uTrust Token Flex can be used for logging on to a PC, signing and encrypting documents or emails, and authenticating to secure web sites or the user's company's virtual private network (VPN).

Features

- Slim, elegant design
- ID-000 credential
- USB 2.0 host interface
- USB CCID compliant
- SMARTOS™ powered

uTrust Token Flex

Parameter	Details
Host Interface	USB 2.0 full speed (12 Mbps)
Smart Card Interface	
Supported Standards	ISO/IEC 7816 Part 1 to 4
Supported Tag ICs	All major ISO/IEC 7816 compliant Smart Card IC support
Smart Card Protocols	T=0, T=1
Smart Card Interface Speed	<ul style="list-style-type: none"> Up to 600 kbps (depending on card) TA1=97
Smart Card Clock Frequency	ISO/IEC 7816 compliant; Operates up to 4.8 MHz
Supported Smart Card Types	5V, 3V and 1.8V, ISO/IEC 7816 Class A/B/C
Power to Smart Card	60mA in Class A; 55mA in Class B; 35mA in Class C
Smart Card Detection	<ul style="list-style-type: none"> Automatic power on/off Short circuit protection
Card Size	ID-000 (SIM size)
Contact Type	Sliding Contact Socket (6 pin)
Driver and Software	
PC/SC Driver	PC/SC Specification Ver. 2.0 <ul style="list-style-type: none"> Windows® XP/Vista/7/8/10 (32/64 bit), Windows® Server 2003/2008/2012, Windows® CE 6.0, 7.0 MacOS 10.5.x, 10.6.x, 10.7.x, 10.8.x, 10.9.x, 10.10.x, 10.11.x Linux 2.4.x, 2.6.x (32/64 bit)
Software	<ul style="list-style-type: none"> PC/SC API CT-API (through wrapper on top of PC/SC) M-Card API (through wrapper on top of PC/SC)
Operating Conditions	
Power Supply	Bus-powered USB
Power Consumption	<20 mA with standard smart; <500 µA in Standby Mode
Dimensions	50 x 18 x 9.5 mm
Weight	6 g
Operating Temperature Range	0° to 50° C (32° to 122° F)
Storage Temperature Range	-20° to 60°C (-4° to 140° F)
Operating Humidity Range	Up to 95% RH non-condensing
Connector	USB Type A Connector
Status Indicator	Green LED
Firmware	CCID
Firmware In-Field Upgradeable	No
Certifications and Compliances	
Systems/Standards	ISO/IEC 7816, USB 2.0 Full Speed, CCID, Microsoft® WHQL
Regulatory/Environmental	CE, FCC, RoHS2, REACH, WEEE
Ordering Information	
Part Number	905599-1 (Black), 905599 (White)

Instructions for Use

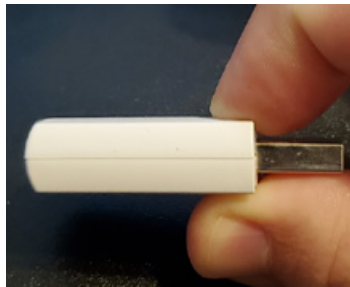
1

Remove cap



2

Press down on tab



3

Slide tray back



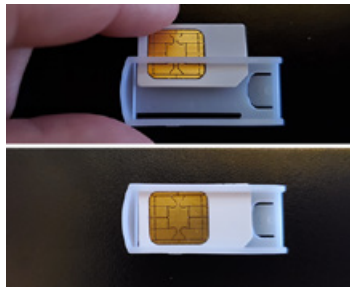
4

Remove tray



5

**Insert SIM into tray with
chip facing open side,
notch to the right**



6

Slide tray back into key

